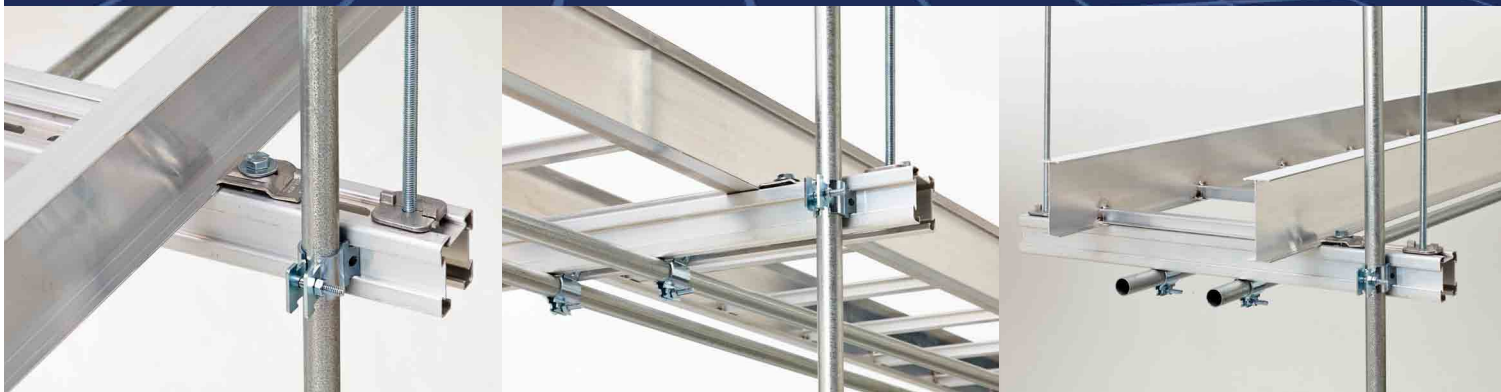


4Dimension™ strut system

Changing how we build our future



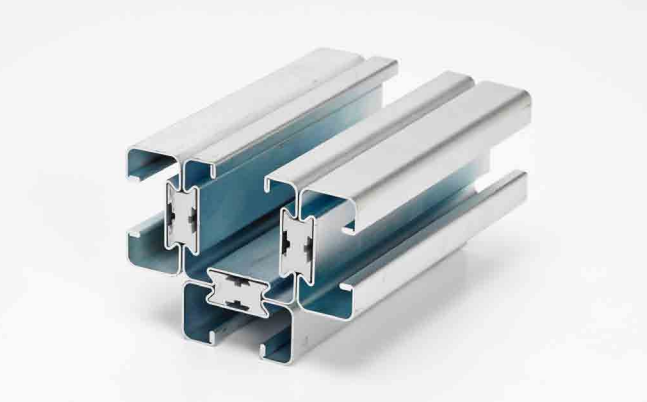
B-Line
by **EATON**

4Dimension™ strut system

Changing how we build our future

Eaton's 4Dimension strut system changes how installers will build and install support systems for electrical, mechanical, plumbing, HVAC and data centers in new and retrofit commercial and industrial applications.

The revolutionary strut profile design and innovative accessories help installers compress project schedules and cut material costs without sacrificing load while increasing configuration flexibility.



Innovative features

- Four-sided functionality
- Superior strength, lighter weight for improved performance
- Modular design provides versatility
- SH hole accepts 5/8" hardware
- Innovative fitting solutions with virtually hundreds of possibilities
- Ideal for new and retrofit applications
- Meets or exceeds MFMA standards
- Patents pending

Lowest total cost solution

- Up to 50% reduction in installation time for trapeze applications
- Up to 55% reduction in material cost in many applications
- Helps save space and weight by fully utilizing all four sides for ease and flexibility of installation
- Functional replacement for back to back strut system, with considerable cost and material savings
- Compatible with most existing fittings and accessories



4Dimension™ Strut Channel Nuts

The unique designs of the 4Dimension strut channel nuts can be used on multiple sides of the 4Dimension strut channel, allowing for numerous designs and applications. Wire Wing and Slide-In Nuts can also be used with traditional strut.



Wire Wing Nut*

- Alternative to spring nuts
- Helps eliminate tangling
- Installs mid-span on 4D22 & 4D21



Dove-Tail Twirl-Nut™*

- Can be inserted at any length of the dove-tail strut channel
- Helps save time during installation



Slide-In Nut*

- Able to use on all four sides of 4D22 strut
- Works in dove-tail of 4D21
- Helps maximize options in tight spaces



Dove-Tail Combo Nut Washer*

- Saves time during installation
- Eliminates the need for flat washer
- Works on dove-tail side of channel

4Dimension™ Strut Fittings & Accessories

Innovative strut fittings and accessories help eliminate the need for special orders of welded configurations.



Dove-Tail Bar*

- Used to join any two dove-tail strut lengths for horizontal applications; use recommended set screw
- Eliminates the need for special order of several welded strut combinations



Snap On Clamp*

- Snap on clamp used to create A & E3 strut combinations
- Used with 4D22 (2" x 2")



Dual Dove-Tail Nut*

- Used to join any two dove-tail strut lengths (one with SH slot)
- Eliminates the need for special order of A & D strut combination designs



Strut System Post Base

- Base supports for vertical and horizontal mounting
- Works with 4D22 & 4D21

* Patent Pending

4Dimension™ Strut Clamps

Strut clamps are designed to provide additional functionality and flexibility of modular strut design.



Universal Pipe Clamp*

- Ideal for traditional strut continuous open slot, 4Dimension strut continuous slot and dove-tail for 4" and smaller pipe clamps
- Supports the same design load in either continuous open slot or dove-tail application (reference safety factor)



Universal Beam Clamp*

- Helps save time by eliminating the need to remove nut and washer during installation
- Compatible with 4Dimension and traditional strut systems



Strengthening Clamp*

- Two-piece break apart design
- Recommended for strut grid or other applications that require higher loads
- Can be used as hanger

4Dimension™ Strut System Trapeze Solutions

Two trapeze solutions designed to provide time savings and flexibility during installation.



Flip Clip™ Solution*

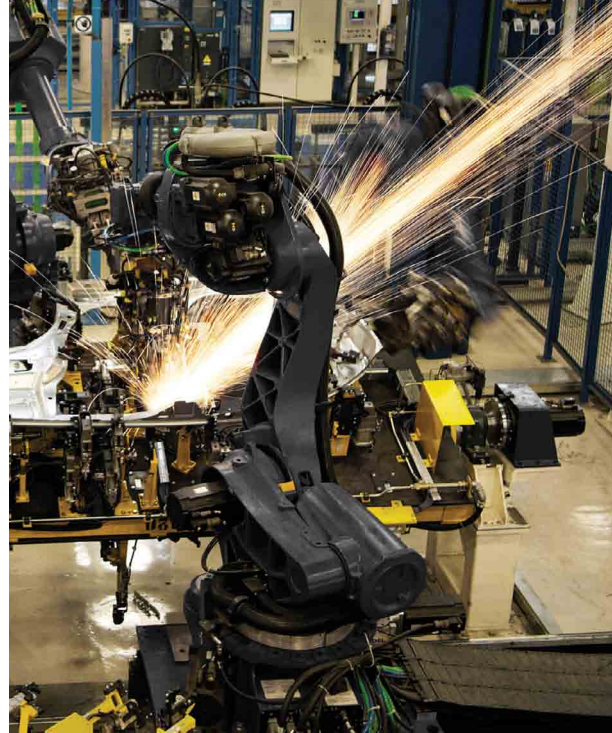
- Saves up to 30% on installation time over traditional strut trapeze methods
- Eliminates up to 50% materials required to assemble
- Clip self-locks into strut with SH slot pattern
- Can be used with long slot hole pattern and solid strut by using self-tap screw to hold in place



Turn and Lock Solution*

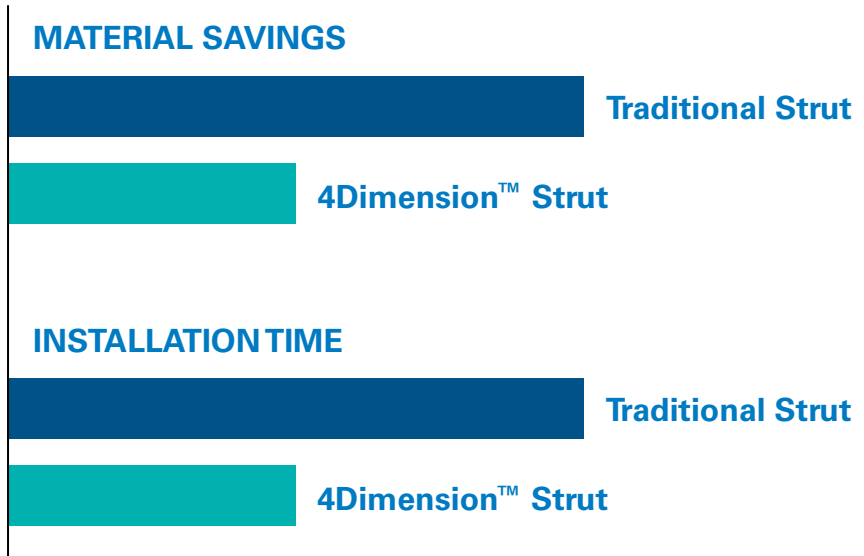
- Saves up to 50% on installation time over traditional strut trapeze methods
- Eliminates the need for lock nut or hex nut
- Helps reduce parts to assemble by up to 50%
- Attaches onto 3/8" ATR at any point along the ATR

* Patent Pending



Save up to 50% on material and installation time

With the introduction of the 4Dimension™ strut system with four-sided functionality, Eaton's B-Line Business has expanded strut into the next dimension by delivering up to 50% savings on materials and installation time.



TOOLS & RESOURCES

CoSPEC™ Specifier Center

A one-stop design resource for B-Line products. With nearly 100 different CAD, BIM, and graphic formats, customers can easily select, view and download B-Line products in 2D and 3D.

To learn more, visit www.cooperblineline.com/CoSPEC.

eLearning Videos & Instruction Sheets

We offer a variety of eLearning product and services from basic to advance.

To learn more, visit www.cooperblineline.com/4Dimension.

Takeoff Services

For large project bids and take-off list of materials, Eaton's B-Line Business can provide the details you need to quickly help you estimate your costs. When it comes to custom requirements, our team of sales engineers can help with advanced quotes and custom solutions as required.

To learn more, visit www.cooperblineline.com/contactus.

On-Line Calculators

Helps calculate the potential material and labor savings in your project by utilizing the 4Dimension strut system.

To learn more, visit www.cooperblineline.com/4Dimension.

Changing how we build our future

For additional support, contact your local B-Line specialist at:

- Phone: 800-851-7415
- Fax: 618-654-1917
- Email: www.cooperblineline.com/contactus

To learn more, visit www.cooperblineline.com/4Dimension



For more information, visit
www.cooperblines.com/4Dimension.

U.S. Customer Service Center is staffed Monday through Friday from 7 a.m. to 5 p.m. Central Standard Time.

Eaton's B-Line Business - United States
509 West Monroe Street
Highland, IL 62249
United States
800-851-7415
www.cooperblines.com/contactus

Eaton's B-Line Business - United States
13201 Dahlia Street, Suite 200
Fontana, CA 92337
United States
951-737-5599
www.cooperblines.com/contactus

Eaton's B-Line Business - Canada
5925 McLaughlin Road
Mississauga, ON L5R 1B8
Canada
800-569-3660
www.cooperblines.com/contactca

Eaton
1000 Eaton Boulevard
Cleveland, OH 44122
United States
Eaton.com

Eaton's B-Line Business
509 West Monroe Street
Highland, IL 62249
Eaton.com

© 2014 Eaton
All Rights Reserved
Printed in USA
Publication No. 4DVP-14
September 2014

Eaton is a registered trademark.

All other trademarks are property
of their respective owners.